

Chapter 6 Review

Define:

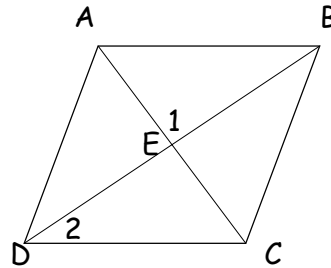
1. Parallelogram
2. rhombus
3. rectangle
4. square
5. kite
6. Trapezoid
7. isosceles trapezoid

List the properties of each

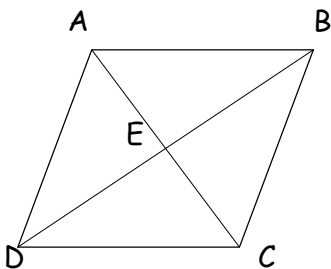
8. Parallelogram
9. rhombus
10. rectangle
11. square
12. kite
13. Trapezoid
14. isosceles trapezoid

15. Determine the most precise name for quad LMNP if  $L(1, 2)$ ,  $M(3,3)$ ,  $N(5, 2)$ ,  $P(3,1)$ .

16. ABCD is a rhombus, with  $m\angle 1=9x$  and  $m\angle 2=x$ . Find  $m\angle CAB$ .

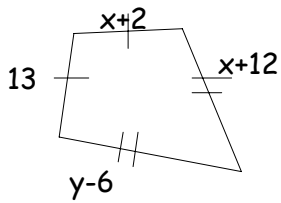


17. ABCD is a rhombus, with  $AC = 12$  and  $BD = 18$ . Find the perimeter of the rhombus.

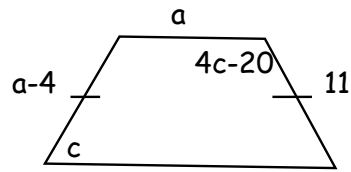


18. In parallelogram RSTU,  $m\angle R=2x-10$  and  $m\angle S=3x+50$ . Find  $x$ .

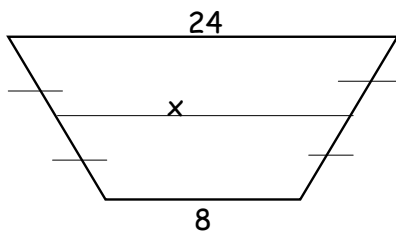
19. Find the value of the lengths of the sides.



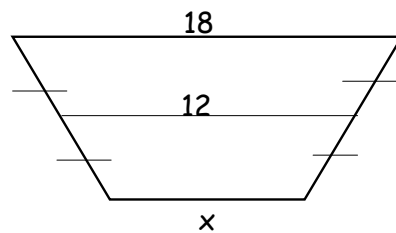
20. Find the lengths of the sides and measures of the angles.



21. Find x.



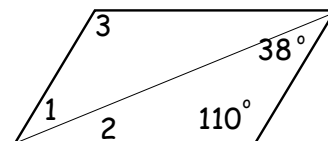
22. Find x.



23. Find x and y in parallelogram PQRS if T is the intersection of the diagonals.

$PT=2x$ ,  $TR=y+4$ ,  $QT=x+2$ ,  $TS=y$

24. Find the measures of the numbered angles in the parallelogram.



25. LMNP is a rectangle. Find the value of  $x$  and the length of each diagonal.

$LN=x$  and  $MP=2x-4$

26. Find  $x$  and  $FG$  and  $FH$

